



# SWISSPEARL ARCHITECTURE 20

International Edition – High Profile Buildings

swiss  
pearl®

# SWISSPEARL ARCHITECTURE 20

## Report

2 **Home is Where the Heart is – Designing Houses to Live in**

4 **Residential Apartment Blocks, Brescia, Italy**  
Studio 5+1AA, Milan

10 **Common Public Housing, Copenhagen, Denmark**  
ONV Architects, Vanløse

16 **Pisissia Residence, Nuuk, Greenland**  
AB Tegnestuen Aps, Horsens

22 **Casa Montarina, Lugano, Switzerland**  
Lorenzo Felder, Lugano

28 **Semi-detached Houses, Uboldo, Italy**  
Marco Castelletti, Erba

32 **House GV-17, Sveti Martin na Muri, Croatia**  
Vedran Pedišić, Zagreb

## Interview

38 **Talking with Vedran Pedišić, Zagreb, Croatia**

40 **Sonya Perica Residence, Sydney, Australia**  
Jessica Matson, Marrickville

44 **House M2, Bozen, Italy**  
Monovolume architecture + design, Bozen

48 **House Hindås, Gothenburg, Sweden**  
Inobi AB, Gothenburg

50 **Single-family House, Parede near Lisbon, Portugal**  
Humberto Conde, Lisbon

56 **ÉMI Construction Knowledge Center, Szentendre, Hungary**  
Puhl and Dajka Architects Ltd, Szentendre

62 **Multi-purpose Centre, Žabčice, Czech Republic**  
Jan Mertlík, Prag

## Flash Info

64 **Housing Habakuk, Maribor, Slovenia**  
Styria arhitektura d.o.o., Maribor

# House M2, Bozen, Italy

## Climate House



**Flush floor surfaces create a seamless transition from the living room to the pool area.**

A multi-layered envelope, high-performance glazing and a photovoltaic installation on the roof significantly reduce energy expenditure in this luxury residence. The two apartments occupy an entire floor each and have access to spacious outdoor areas as well as a shared underground car park.

Embedded in a magnificent alpine setting, but Mediterranean in feel, House M2 on the outskirts of the South Tyrolean capital of Bozen echoes the cultural ambiguity of this German-speaking region in the north-eastern part of Italy. Completed in 2012 by local practice monovolume architecture + design, the structure comprises a full-size basement and two separate apartments, one on each of the two upper floors.

Towards the access road to the north and east, the building presents itself as a compact volume punctu-

ated by window openings. The south and west fronts, in contrast, boast extensive glass surfaces facing, respectively, the pool area at ground level and a large terrace on the upper story. An alteration in cladding material from light grey plaster to white Swisspearl cement composite panels accentuates the two separate units in a building that might otherwise be misconstrued as a single-family home.

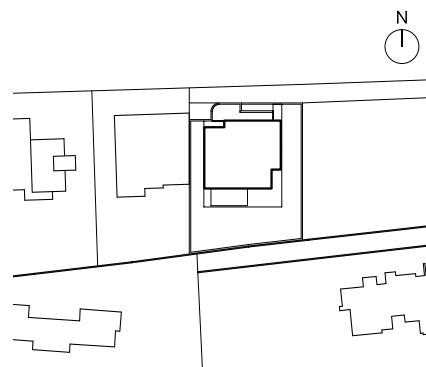
Both units are roughly square in plan; the upper one, however, is considerably smaller and shifted out of the centre, thus creating a stepped section and – in connection with cantilevering floor slabs – adding a strong horizontal emphasis to the building. The interior design mirrors the minimalist exterior with a combination of dark stone and hard wood floorings set against clinically white wall surfaces and kitchen fittings. Flush



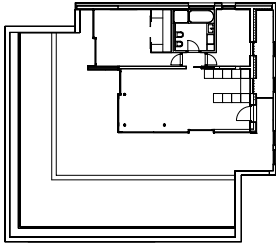
**A change in cladding material from light grey plaster to white Swisspearl panels accentuates the two separate units of the building.**

floor surfaces suggest a seamless transition from the living room to the outside areas, while slender black window frames, frameless glass railings and Italian design furniture add to the refined look of the apartments.

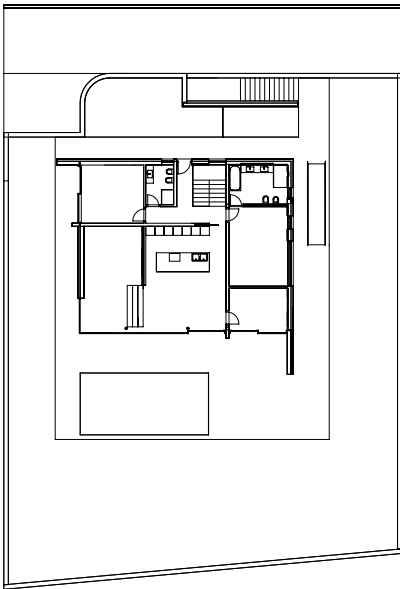
Although they are different sizes, the two units feature a similar layout based on a distinction between day and night zones. Arranged in an L-shape along the northern and eastern sides of the building, the ground floor accommodates two bedrooms, a study and two bathrooms as well as a private staircase leading to the underground car park. The living space overlooking the patio is divided into a generous dining kitchen to one side, and a lounge with fitted shelves to the other. The distinction between public and private spaces is clearly articulated in the upper apartment where an internal wall cuts through the entire length of the apartment,



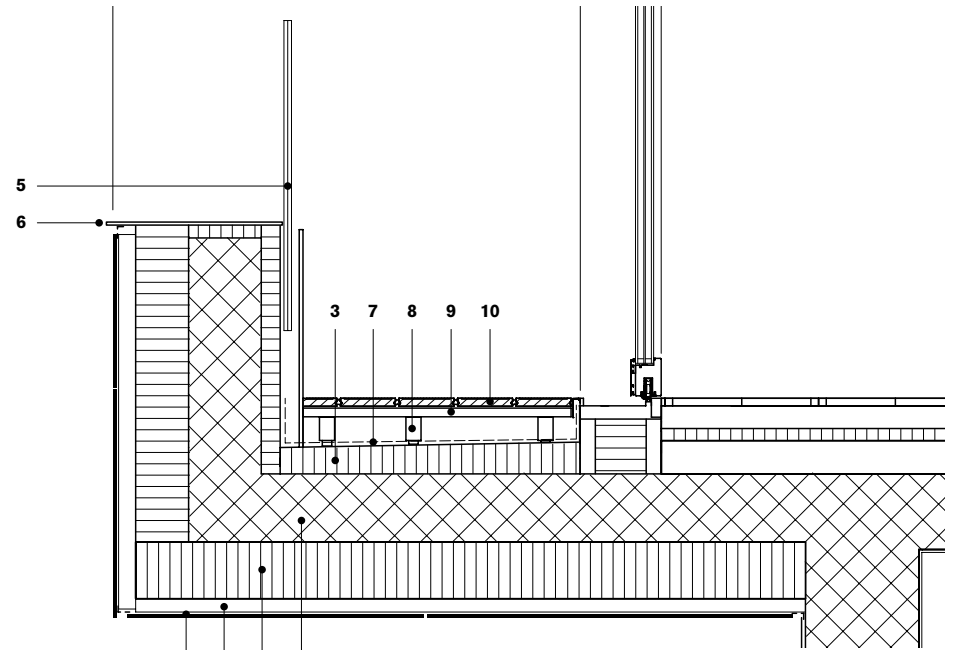
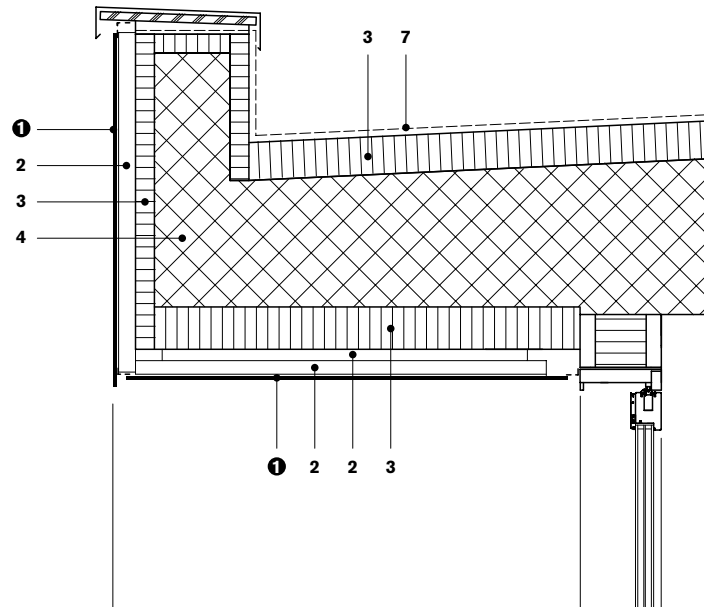
**“A CONTINUOUS WALL, WHICH PASSES PARALLEL TO THE EXTERIOR WALLS, SEPARATES THE NIGHT AREA FROM THE DAY AREA.” MONOVOLUME**



First floor 1:500



Ground floor



Vertical section 1:20

- 1 Swisspearl® cement composite panel 8 mm
- 2 ventilation cavity, sub-framing
- 3 thermal insulation
- 4 concrete
- 5 glazed balustrade
- 6 plastic board
- 7 waterproofing
- 8 rubber support
- 9 aluminium sub-framing
- 10 wooden floor

separating two bedrooms and a bathroom to the north from a large combined kitchen, dining and living space to the south.

House M2 has been awarded a category A classification by ClimateHouse, a regional agency that certifies buildings in terms of their energy consumption. Key sustainable features include the highly insulated envelope, rooftop photovoltaic panels and triple glazing throughout. The floors are composed of a thick layering of insulation materials, measuring nearly one metre between the ground floor and the basement and allowing the designers to carve out a lowered lounge zone without impacting on the ceiling heights underneath. Likewise, the area of the terrace immediately adjacent to the upper floor living room lies lower than the peripheral one, thus offering a great degree of privacy to both residents. *Patrick Zamariàn*

**“THE PLASTERED BASEMENT  
SERVES AS PEDESTAL  
FOR THE SMALLER UPPER  
FLOOR, WHICH IS COVERED  
BY CLADDING SHEETS.”  
MONOVOLUME**



**Location** San Maurizio, Bozen, Italy

**Client** Private

**Architects** monovolume architecture + design (Patrik Pedó, Juri Pobitzer, Konrad Rieper; in collaboration with Simon Constantini, Luca Di Censo), Bozen, Italy

**Building period** 2011–2012

**General contractor** Kofler Baur srl, Bozen, Italy

**Façade construction** Trimont GmbH, Leifers, Italy

**Façade material** SWISSPEARL® CARAT, Onyx 7090

**Publisher**

Eternit (Schweiz) AG, CH-8867 Niederurnen, Switzerland  
phone + 41 (0)55 617 11 11, fax + 41 (0)55 617 12 71  
info@swisspearl.com, www.swisspearl.com

**Editor** Michael Hanak, Zurich, Switzerland

**Advisory Board** Christine Dietrich, Head of Architecture,  
Niederurnen

**Detail plans** Deck 4 GmbH, Zurich

**Translations** Beverly Zumbühl, Zurich

**Design** Bernet & Schönenberger, Zurich

**Proofreading** Jacqueline Dougoud, Zurich

**Printed by** Südostschweiz Print AG, Chur, Switzerland

**Photos**

BDE Architekten GmbH, Oliver Erb, Winterthur (p. 2)

John Edward Linden, Woodland Hills (p. 3)

Jürg Zimmermann, Zurich (pp. 4-9, 22-31)

Tom Jersø, Copenhagen (pp. 10-15)

Leif, Nuuk (pp. 16-21)

Sandro Lendler, Zagreb (pp. 32-39)

Simon Wood, Sydney (pp. 40-43)

Meraner-Hauser Photostudio OHG, St. Michael/Eppan (pp. 44-47)

Claes Westlin, Malmö (pp. 48-49)

Fernando Guerra, Lisbon (pp. 50-55)

Szabó Béla, Ótvevény (pp. 56-61)

Roman Franc, Brno (pp. 62-63)

Miran Kambič, Radovljica (p. 64)

Print run 12,000

The magazine Swisspearl Architecture is distributed exclusively  
by authorised distributors in 49 countries on 5 continents.

ISSN 1661-3260

The contents of this magazine are the responsibility of the authors  
concerned. Drawings kindly transmitted by the architects  
correspond to the design phase; detail plans were only reworked  
for greater legibility. Neither the editor nor Eternit (Schweiz) AG  
checked the constructive accuracy of the drawings.

Except for Carat Onyx, Amber and Planea shades, all cement  
composite panels Swisspearl® Carat, Reflex, Xpressiv and Nobilis  
are only manufactured in Switzerland by Eternit (Schweiz) AG.

This magazine and all its contributions are protected by copyright.



- Australia** Sonya Perica Residence, Sydney
- Croatia** House GV-17, Sveti Martin na Muri
- Czech Republic** Multi-purpose Centre, Žabčice
- Denmark** Common Public Housing, Copenhagen
- Greenland** Pisissia Residence, Nuuk
- Hungary** ÉMI Construction Knowledge Center, Szentendre
- Italy** House M2, Bozen  
Residential Apartment Blocks, Brescia  
Semi-detached Houses, Uboldo
- Portugal** Single-family House, Parede near Lisbon
- Sweden** House Hindås, Gothenburg
- Switzerland** Casa Montarina, Lugano